

OMB-4200 Bagging System

NOVA

AUTOMATION

NOVA Automation offers an open mouth bagging system suitable for companies across many industries. The OMB-4200 is designed to be more cost efficient, safer and offer increased performance. Whether you are bagging pet food, seed, feed, sugar or other types of bulk materials, the OMB-4200 enables you and your team to produce product at a much higher volume without worrying about the detrimental costs of downtime.

Key Features and Options

- Market leading fully automated product change over. The system comes standard with servo-controlled change over. Simply load your bags on the magazine, select your product recipe, and the machine makes all necessary adjustments and it's ready to start bagging.
- Includes a comprehensive sensor package to ensure the system continues to run and can automatically clear faults
- Auto bag indexing squaring to ensure proper placement on the fill spout.
- Empty bag magazine detection
- Bag pre-opener vacuum detection with auto recovery
- Missing bag detection prevents system from filling if bag is not properly on the fill spout.
- Auto bag reject, clearing and recovery eliminates stoppages for faulty bags.
- Safety glass surrounding the machine to provide easy viewing for quality control.
- Robust construction designed to withstand the most demanding industrial environments: 3.5" square tube steel frame main frame, 2" and 1" aluminum anodized moving swinger and transfers arms, type 304 stainless contact parts and corrosion resistant packages available.
- Bag settling conveyor designed to help fill hard to settle products in bags maximizing usable bag volume.
- Empty bag swinger arm comes standard with mid swing position to minimize placement time if waiting on fill cycle.
- Bag grippers maintain bag control eliminating any type of bag top reforming.
- Comes standard with overside bag magazine reducing empty bag fills and extending run-time.
- System comes standard with integrated resistant bar heat sealer compatible with zippers and resealable poly bags.
- Optional full bag transfer sytem to external sealer: sewing machine, pinch bag sealer, hot air sealer, etc.



Your Process, Automated.

Example System Operation

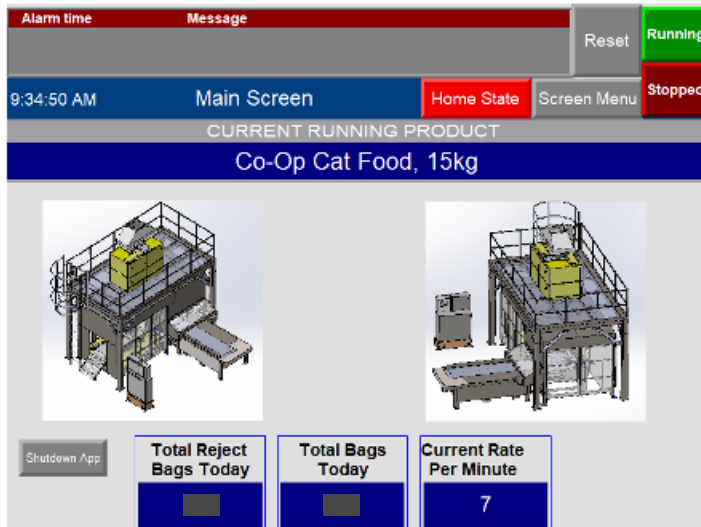
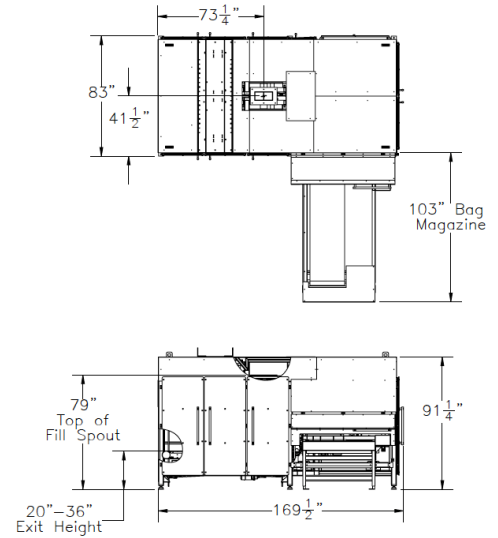


Figure 2. HMI Overview Screen



TECHNICAL SPECIFICATIONS

Bag Sizes

Min W 12" to Max W 24"

Min L 18" to Max L 40"

Min 6" free bag top

Speed

Up to 20 bags per minute depending on product and bag size

Utility Requirements

Electric power- 460 VAC,3PH,60A

Compressed dry air- 25cfm @80 PSI

Control System

Allen Bradley PLC Controller with 9" color touchscreen

Electrical Servo Controlled Actuators and Variable Frequency Drives

Ethernet support connection ready

System Dimension

Main Frame -83" W x 169" L x 91" H

Bag magazine -40" W x 75" L x 37" H

Options for custom bag magazine design, custom sized spouts to accommodate smaller bags, optional integrated and external sealing options: sewing machine, pinch bag closer, hot air sealer System can be supplied with NOVA scale system or third party scale systems